

Mist BT11 Access Point



Enterprise-grade Bluetooth® LE

Mist built the first AI-driven wireless platform, designed specifically for the Smart Device Era. Mist's Learning Wireless LAN makes Wi-Fi predictable, reliable and measurable by providing unprecedented visibility into the user experience and by replacing time consuming manual IT tasks with proactive automation. In addition, Mist is the first vendor to bring Enterprise-grade Wi-Fi, Bluetooth® LE and IoT together to deliver personalized, location-based wireless services without requiring battery-powered beacons.

The Mist Learning WLAN consists of the following products:

The Mist Cloud

All wireless deployment, setup, operations, and insight are handled via the Mist cloud, which was designed to provide unprecedented visibility and control at web scale. A microservices architecture provides maximum agility when rolling out new features/services.

The Mist AP Family

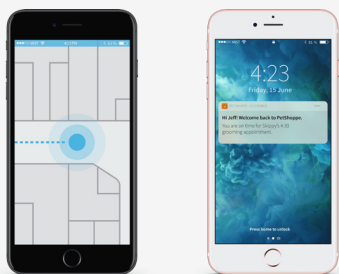
The AP21, AP41, and AP61 are high performance, enterprise-grade Access Points for 802.11ac Wave 2 Gigabit Wi-Fi and Bluetooth® Low Energy. The Mist BT11 (detailed here), is an enterprise-grade Access Point exclusively for Bluetooth® Low Energy. To view other datasheets, go to www.mist.com/resources/datasheets/



The Mist cloud, featuring a micro-services architecture, and powered by Marvis AI

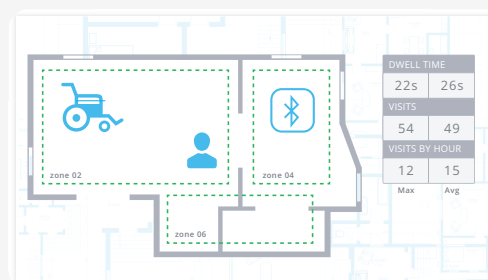
| | AP61 | AP41 | AP21 | BT11 |
|-----------------------|----------------------|----------------------|----------------------|------------------|
| Deployment | Outdoor | Indoor | Indoor | Indoor |
| Wi-Fi | 802.11ac Wave2 4x4:4 | 802.11ac Wave2 4x4:4 | 802.11ac Wave2 2x2:2 | - |
| Wi-Fi Tri-Radio | ✓ | ✓ | - | - |
| IoT Interface | - | ✓ | - | - |
| Antenna Options | Internal/External | Internal/External | Internal | Internal |
| Virtual Bluetooth® LE | ✓ | ✓ | ✓ | ✓ |
| Warranty | 1 Year | Limited Lifetime | Limited Lifetime | Limited Lifetime |

BLE Engagement Service



Push location-based information to mobile users, such as turn-by-turn directions and messages.

BLE Asset Visibility Service



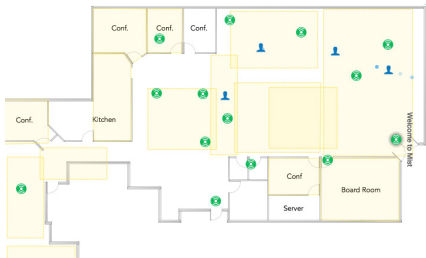
Immediately locate high value resources + analyze traffic patterns

Mist BT11 Features

Mist uses patented technology and Machine Learning to ensure the highest location accuracy with ease of deployment and scale.

Let's get virtual

Patented virtual Bluetooth® LE (vBLE) technology lets you deploy and move virtual beacons with the simple click of a mouse (or via APIs), eliminating the need for physical beacons.



The BT11 works with the Mist cloud to provide high accuracy enterprise-grade Bluetooth® LE location services using virtual beacons

Machine learning eliminates manual calibration

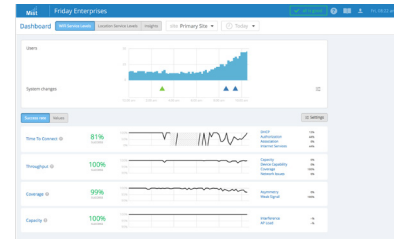
Mist continuously collects data in real-time from all mobile devices to ensure accurate location estimates without the need for Bluetooth® LE site surveys.

Best location accuracy and performance

Dynamic vBLE 16 antenna elements in Mist APs plus machine learning in the Mist cloud ensure 1 to 3m for mobile devices, and in-room / zone level for Bluetooth® LE assets.

Detailed analytics

Monitor user visits and dwell times, with detailed drill down into specific zone traffic patterns and congestion points.



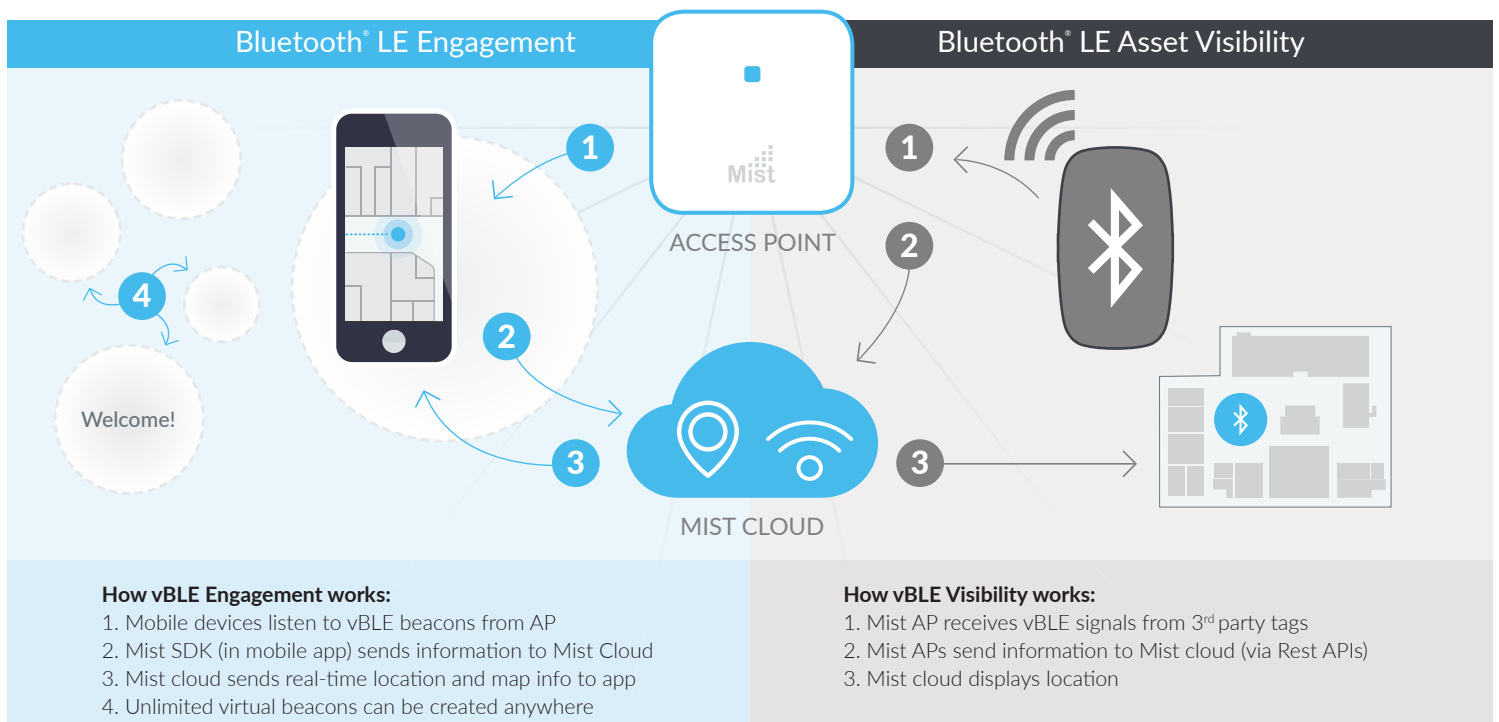
Real-time visibility

Mist gives you a real-time view of the RF environment from the mobile user's perspective. This lets you detect coverage holes and other issues, even as users move around and their RF coverage patterns change.

Open APIs for easy integration

Mist offers a mobile SDK for iOS and Android with three types of APIs (vBLE beacon, indoor location, and zone analytics) for seamless integration with complementary products.

How Mist vBLE Works



How vBLE Engagement works:

1. Mobile devices listen to vBLE beacons from AP
2. Mist SDK (in mobile app) sends information to Mist Cloud
3. Mist cloud sends real-time location and map info to app
4. Unlimited virtual beacons can be created anywhere

How vBLE Visibility works:

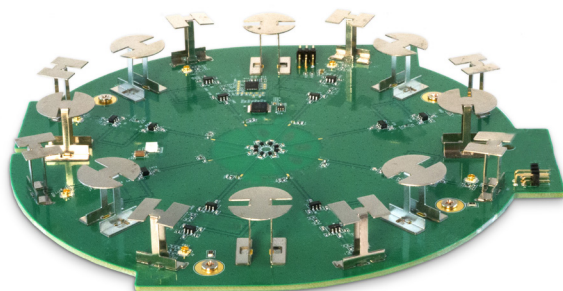
1. Mist AP receives vBLE signals from 3rd party tags
2. Mist APs send information to Mist cloud (via Rest APIs)
3. Mist cloud displays location

Mist BT11 Specifications

| SPECIFICATIONS | BT11 |
|----------------------------------|--|
| Power Options | 802.3af or 802.3at PoE |
| Dimensions | 203mm x 203mm x 40mm (7.99in x 7.99in x 1.57in) |
| Weight | 0.636 kg (1.4 lbs) |
| Operating Temperature | Internal antenna 0° to 40° C |
| Operating Humidity | 10% to 90% maximum relative humidity, non-condensing |
| Operating Altitude | 3,048m (10,000 ft) |
| Electromagnetic Emissions | FCC Part 15 Class B |
| I/O | 1 - 10/100/1000BASE-T auto-sensing RJ-45 with PoE In 1 - 10/100/1000BASE-T auto-sensing RJ-45 with 48Vdc PoE Out |
| RF | 2.4GHz BLE with Dynamic Antenna Array |
| Indicators | Multi-color status LED |
| Compliance Standards | UL 60950-1 CAN/CSA-C22.2 No. 60950-1 FCC Part 15.247, 15.407, 15.107, and 15.109 RSS-247 ICES-003 (Canada) |

| I/O PORTS & ACCESSORIES | |
|-------------------------|---|
| Reset | Reset to the factory default settings |
| Eth1+PoE Out | 10/100/1000 BaseT RJ45 interface that can output 48V PoE |
| Eth0+PoE In | 10/100/1000 BaseT RJ45 interface that supports 802.3at PoE PD |

| ORDERING INFORMATION | |
|--------------------------|---|
| US/FCC Domain | BT11-US (Internal Antenna) BT11E-US (External Antenna) |
| Rest of the World | BT11-WW (Internal Antenna) BT11E-WW (External Antenna) |



Mist Omni-Directional Bluetooth® Antenna Array